



Charter Schools Report

August 1, 2024

Agenda Item #1: Charter Schools Dashboard Metric

Information

Action

Discussion

Purpose:

The purpose of this information is to provide key statistics related to Charter Schools.

Background:

N/A

Suggested Action/Motion:

None

President's Recommendation:

N/A

	2019-20	2020-21	2021-22	2022-23	2023-24	Current Status/Trend	Notes
LSSU Authorized Academies	21	21	21	21	19	↕	26 total sites
LSSU Authorized Academies Enrollment	9,274	9,252	9,248	9,048	8,815	↕	Estimated Fall Enrollment Counts
Academy Compliance Percentages (Epicenter Database On time/Accurate)	92/98	95/98	89/97	89/97	90/96	↔	Over 2,300 documents submitted
Authorizer Accreditation (Cognia) Assurance and Verifications	--	--	Accredited	-----	Valid to 2027	↔	A&V completed my MDE and MCCA
LSSU 3% Oversight Revenue in 3% Fund	\$2,447,516	\$2,490,784	\$2,575,224	\$2,712,556	\$2,968,862	↑	3% Revenue for FY24
Transfer to General Fund from 3% Fund	\$950,000	\$1,108,334	\$950,000	\$1,500,000	\$1,100,000	↕	Transfer to GF for FY24
Ending Fund Balance in 3% Funds	\$720,037	\$543,028	\$963,637	\$552,879	----	↑	Projected Fund Balance
Charter School Office Expenditures	\$1,207,378	\$1,125,503	\$1,091,685	\$1,271,357	\$1,400,000	↑	Projected Budgeted Expenditures
Outreach/Camps Participation Numbers	1,687	165	613	701	1,423	↑	Camps, CFRE, Show, Outreach
Former Charter School Students attending LSSU	21	22	26	12	5	↕	
Dual /Concurrent Enrollment students from Charters taking LSSU classes	77	152	81	114	73	↕	Fall- 36 Spring-37
Professional Development Offerings to Academy Boards on quality Governance and Oversight	Summer Retreat 1 Legal 5 Webinars	9 Webinars	12 Webinars	10 Webinars	5 Webinars 5 On Demand 5 Face to Face	↑	Partnering with MCCA on Webinar Series Regional PD
Professional Development Offerings to Academy Staff	25+ Sessions	25+ Sessions	25+ Sessions	25+ Sessions	25+ Sessions	↔	Administrator Retreat in July
Chartering Laker Scholarship	\$6,000	\$5,500	\$6,500	\$6,000	\$7,000	↑	YTD

* The Charter Schools Office has one reauthorization for the 23-24 school year.



Charter Schools Report
August 1, 2024

Agenda Item #2: Academic Support Dashboard

Information

Action

Discussion

Purpose:

The purpose of this information is to provide key statistics related to Charter Schools.

Background:

N/A

Suggested Action/Motion:

None

President's Recommendation:

N/A

LSSU Charter Schools

SCHOOL INDEX SUMMARY

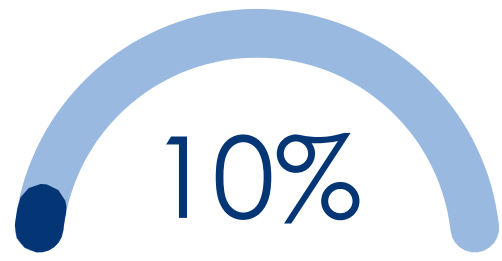
Category Classifications

Support Category	Support Category Full Name	Entrance Criteria	Frequency/Duration of Support Category
CSI	Comprehensive Support and Improvement	<ul style="list-style-type: none"> School has an overall index value in the bottom 5% OR School has a 4-year graduation rate of 67% or less OR School was in a CSI cohort and did not exit CSI OR School was in an ATS cohort and did not exit ATS 	3 years
ATS	Additional Targeted Support	School has both: (1) One or more student subgroups in the bottom 25% of each applicable component (2) AND one or more student subgroups in the bottom 5% overall	6 years
TSI	Targeted Support and Improvement	School has at least one student subgroup at or below bottom 25% for each applicable component	Yearly

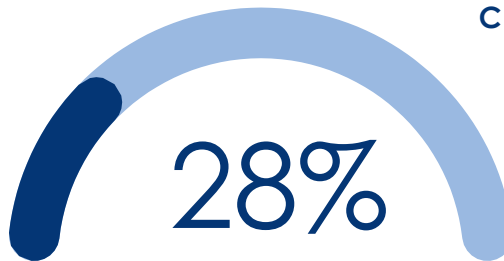
Notable Statistics



THERE ARE 255 SCHOOL DISTRICTS ON THE CSI LIST, OF THAT 28% ARE CHARTER SCHOOLS.

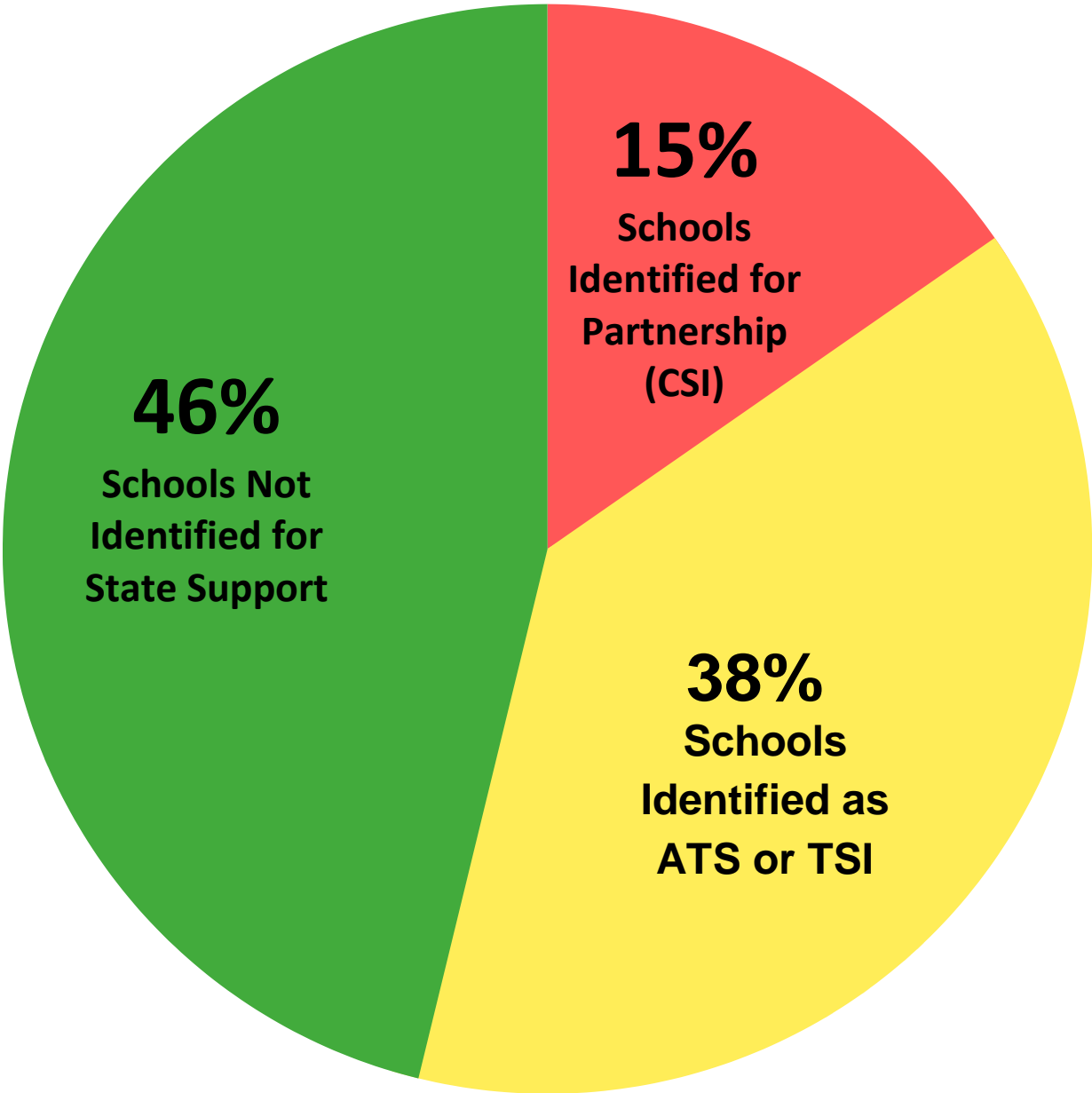


THERE ARE 138 SCHOOL DISTRICTS ON THE TSI LIST, OF THAT 10% ARE CHARTER SCHOOLS.



THERE ARE 68 SCHOOL DISTRICTS ON THE ATS LIST, OF THAT 28% ARE CHARTER SCHOOLS.

LSSU Portfolio Index Reporting



2024-2025 LSSU CSO Support Dashboard

District-Campus	MDE Support Category	Support Notes & Accomplishments
Bay City Academy- Bay City	General Support- No Specific State Required Plan	
Bay City Academy- North Central	General Support- No Specific State Required Plan	
Concord Academy Boyne	General Support- No Specific State Required Plan	
Concord Academy Petoskey	General Support- No Specific State Required Plan	
DeTour Arts & Technology Academy	General Support- No Specific State Required Plan	
Grand Traverse Academy	General Support- No Specific State Required Plan	
Innocademy Allegan	General Support- No Specific State Required Plan	
Innocademy Zeeland	General Support- No Specific State Required Plan	
Regent Park Academy	General Support- No Specific State Required Plan	
Ridge Park Academy	General Support- No Specific State Required Plan	
Tipton Academy- Grades PreK-3	General Support- No Specific State Required Plan	
Way Academy- Chicago Campus	General Support- No Specific State Required Plan	

District-Campus	MDE Support Category	Support Explanation	Support Notes & Progress
ATA	Additional Targeted Support	Students w/ disabilities bottom 5%	It has completed an audit of its Special Education program and working to overhaul it completely. On track.
AIA- Upper Elementary	Additional Targeted Support	Black/African students bottom 5%	CSO Staff are working with Administration to provide instructional coaching for Tier 2 & 3 teachers within this building.
DSLAs- Main Campus	Additional Targeted Support	Students w/ disabilities bottom 5%	District currently has 15 teachers enrolled in LETRS (science of reading training offered through MDE).
Momentum	Additional Targeted Support	Black/African students bottom 5%	Academy is working with local ISD for targeted area. The LSSU CSO will support when needed.
Tipton- 4-8 grades	Additional Targeted Support	Students w/ disabilities bottom 5%	Has completed an audit of its Special Education program and is making changes in areas identified as needing improvement. On track.

District-Campus	MDE Support Category	Support Explanation	Support Notes & Progress
Charlton Heston	Targeted Support & Improvement	Students with disabilities bottom 25%	Academy is working with local ISD for targeted area. CHA received a \$175,000 "Grow your own" grant from the MDE for supporting teacher certification.
DSLAs- Redford Campus	Targeted Support & Improvement	Black/AA & Econ. Dis. Subgroups bottom 25%	Implementing the rest of the district initiatives.
Icademy	Comprehensive Support & Improvement	Unimproved proficiency	Very high performer prior to Covid. No plan of development required by the state. On track.
WAY- Vernor Campus	Comprehensive Support & Improvement	Index bottom 5% and graduation rate	Alternative HS whose students were off track for graduation. District is on track per the MDE.
WAY- Flint Campus	Comprehensive Support & Improvement	Graduation rate	Alternative HS whose students were off track for graduation. District is on track per the MDE.
DSLAs- Oak Park Campus	Comprehensive Support & Improvement	Index bottom 5%	Large increase in Index Score largely in part to their academic growth and their increase in testing participation. While their growth scores are greatly increased their proficiency still has growth to make.
Macomb Montessori	Comprehensive Support & Improvement	Index bottom 5%	MMA has made huge strides in their overall Index scores, greatly increased attendance, and reduced major behavioral incidents almost to zero. They have put in place a support system for teachers to deliver high-quality tier 1 instruction daily; the leadership team members are steadily sharpening how to clearly articulate instructional expectations to teachers and provide constructive feedback. Dr. Teasley encouraged documentation of this teacher support system and future consideration of participation in the Michigan Department of Education's Grow Your Own (GYO) Grant. While their growth scores are greatly increased their proficiency still has growth to make.
AIA- Lower Elementary	Comprehensive Support & Improvement	Index bottom 5%	CSO Staff are working with Administration to provide instructional coaching for Tier 2 & 3 teachers.
AIA- MS/HS	Comprehensive Support & Improvement	Index bottom 5%	CSO Staff are working with Administration to provide instructional coaching for Tier 2 & 3 teachers.



Charter Schools Report
August 1, 2024

Agenda Item 3: Charter School Ascend Academy Resolution (See Appendix I)

Information

Action

Discussion

Purpose:

The purpose of this action is to change the initial contract resolution for Ascend Academy.

Background:

The Charter Schools Office (CSO) opened its application window for new charter schools and received two applications. Ascend Academy met the Phase I and Phase II requirements outlined in the CSO application process. The CSO recommends adjusting the initial Ascend Academy resolution to amend the original timeline established from July 1, 2024 – June 30, 2029 to July 1, 2025 – June 30, 2030. This revised timeline is due to delays in facility readiness. Ascend Academy is working with state entities to bring the facility up to code.

Suggested Action/Motion:

The President recommends the approval of the resolution for Ascend Academy to amend the original timeline established.

President's Recommendation:

Approval of the resolution for Ascend Academy.



Charter Schools Report **August 1, 2024**

Agenda Item #4: Charter Schools Board Member Appointments

Information

Action

Discussion

Purpose:

The purpose of this action is to appoint or reappoint members of the Board of Directors of public school academies.

Background:

The process for appointment and reappointment of members of the Board of Directors of public school academies includes the following steps:

1. The applications of individuals for appointment to the Board of Directors are considered by the Board of Directors who nominate individuals by Board vote for open positions;
2. Background checks are conducted by the Charter Schools Office (CSO);
3. Interviews by CSO staff members are conducted with applicants for appointment; applicants for reappointment are not interviewed; and
4. Applicants are recommended to the Board of Trustees for appointment by the CSO and University President.

The following individuals have been nominated by the Board of Directors, background checks have been completed, and the candidates for appointment have been interviewed or will be interviewed before they are sworn in and U.S. citizenship has been verified.

Those individuals with an * received an approved exigent appointment from the LSSU Board of Trustees President.

Advanced Technology Academy:

Marquis Scott nominated for a reappointment with a term expiring on June 30, 2027.

Bay City Academy:

Robert Anderson nominated for an appointment with a term expiring on June 30, 2027.

Concord Academy Boyne:

Jennifer White nominated for an appointment with a term expiring on June 30, 2027.

iCademy:

William Johnson nominated for a reappointment with a term expiring on June 30, 2027.

Momentum Academy:

Carrie VanZant Rohrbach nominated for a reappointment with a term expiring on June 30, 2027.

WAY Academy of Detroit:

Laura Chavez-Wazeerud-Din nominated for a reappointment with a term expiring on June 30, 2027.

WAY Academy of Flint:

Stephen Murphy nominated for an appointment with a term expiring on June 30, 2027.

Suggested Action/Motion:

The President recommends the appointment of the nominees to the respective Board of Directors for the terms listed.

President's Recommendation:

Approval of the appointment of the nominees to the respective Board of Directors for the terms listed.



Charter Schools Report
August 1, 2024

Agenda Item #5: Charter School Informational Items

Information

Action

Discussion

Purpose:

The purpose of this information is to provide information related to Charter Schools.

Background:

N/A

Suggested Action/Motion:

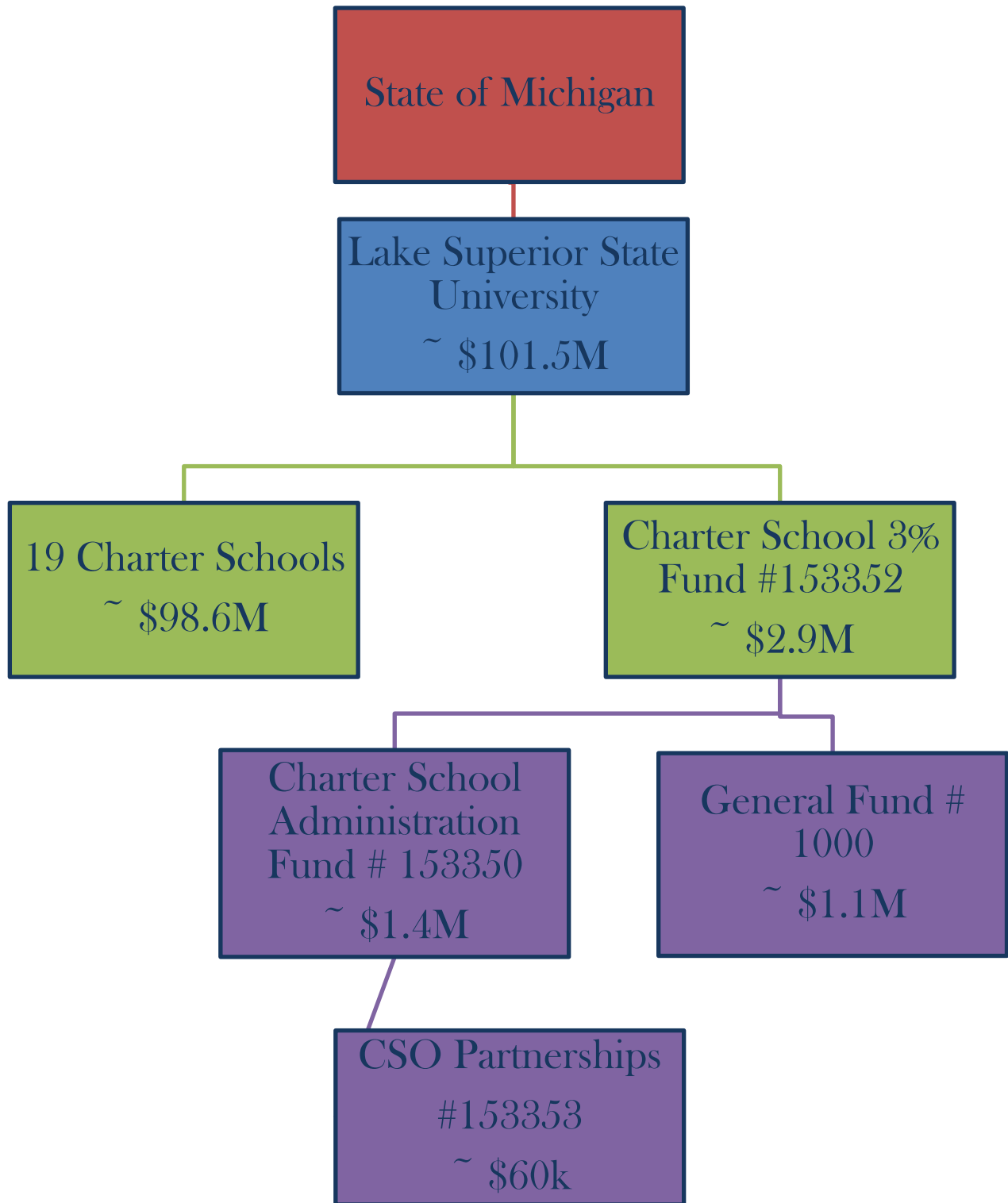
None

President's Recommendation:

N/A

Lake Superior State University

Charter School Funding Chart





State of Michigan

- MDE - creates and initiates the State Aid payments for each Charter School Academy
- Treasury - disburses State Aid payments to LSSU



Lake Superior State University

- Authorizer & Fiscal Agent for 19 Charter School Academies
- Keeps 3% of State Aid for oversight



Charter School 3%, Fund #153352

- Receives all State Aid for each Charter School Academy
- Supports Charter School Administration - 153350, via a monthly transfer
- Supports Charter School Academies & LSSU with 3% Grants



Charter School Administration, Fund #153350

- CSO provides oversight and support to all 19 Charter School Academies
- Operates on a transfer from the Charter School 3% Fund - 153352
- Transfers out to CSO Partners- 153353



19 Charter School Academies

- Fiscally independent of LSSU
- LSSU offers financial support - Compliance Grant, Support Grant, 3% Grant
- Students participate in LSSU events - camps, performances
- Charter School Guarantee

Educational Goals

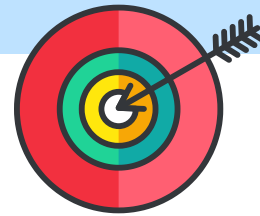
Authorizer Required Goals



Student Growth

Student Conditional Growth Percentiles will be at 50 or above indicating that students are growing like the average "like" learner.

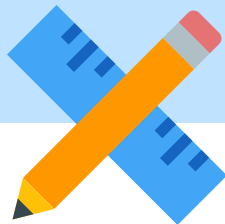
Measure 1



Student Achievement

Cohort students (3+ yr students) will reach achievement targets AND outperform non-cohort students. (<3 yr students)

Measure 2



State & Fed. Account.

The Academy will satisfy all state and federal requirements.

- *State testing proficiency
- *School Index Scores

Measure 3



Academy Specific

These goals are optional but unique to each academy.

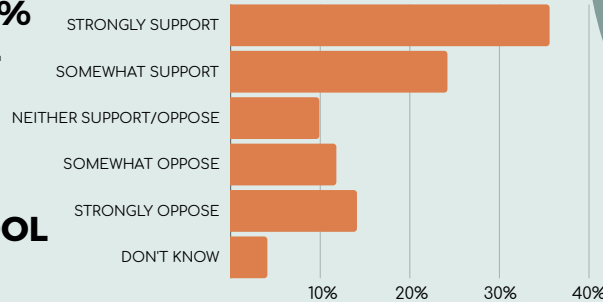
- *Participation in service learning
- *Outdoor learning hours
- *Community & family engagement activity
- *Behavior referrals & suspensions

Measure 4

POLLING *voter* M CHARTERS

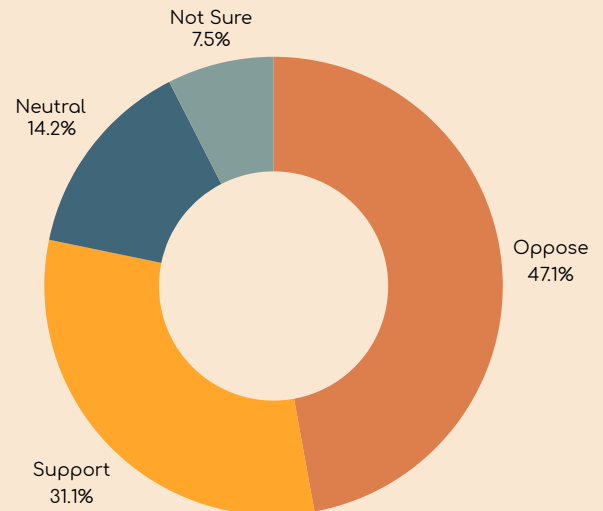
70%
A MAJORITY OF VOTERS (70% TO 12%) BELIEVE THAT CHARTER SCHOOLS SHOULD BE AN OPTION FOR MORE STUDENTS.

VOTERS SUPPORT (60% TO 26%) FUNDING ALL STUDENTS WITH AN EQUITABLE PER-STUDENT FUNDING REGARDLESS OF THE KIND OF PUBLIC SCHOOL THEY ATTEND.



85%
OF VOTERS (85% TO 8%) SUPPORT GIVING MICHIGAN PARENT OPTIONS WHEN CHOOSING A PUBLIC SCHOOL FOR THEIR CHILDREN.

VOTERS DO NOT SUPPORT THE GOVERNOR'S BUDGET PROPOSAL TO CUT 20% FROM THE CYBER CHARTER SCHOOL FUNDING.



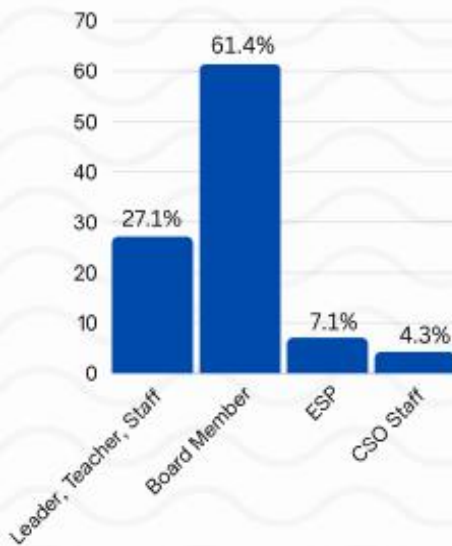
A MAJORITY OF VOTERS FROM ALL PARTIES SUPPORT GIVING PARENTS OPTIONS WHEN CHOOSING A PUBLIC SCHOOL FOR THEIR CHILDREN.

BY PARTY	DEMOCRAT	INDEPENDENT	REPUBLICAN
STRONGLY SUPPORT	58.0%	67.8%	71.5%
SOMEWHAT SUPPORT	22.2%	19.7%	17.9%
NEITHER SUPPORT/OPOSE	5.7%	2.6%	1.9%
SOMEWHAT OPOSE	4.2%	5.3%	2.4%
STRONGLY OPOSE	3.8%	4.6%	4.8%
DON'T KNOW	6.1%	0%	0.5%

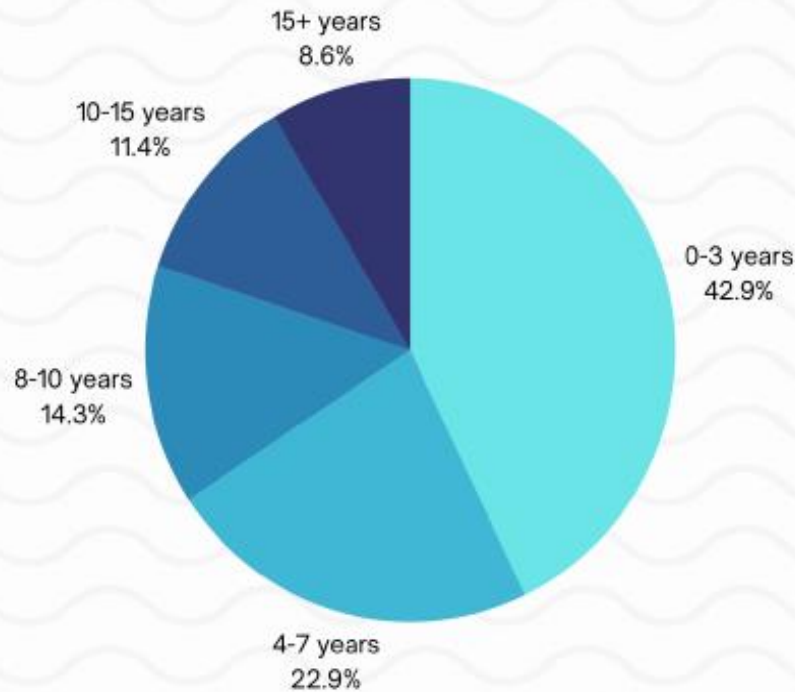
2023-24 LSSU CHARTER SCHOOLS OFFICE

STAKEHOLDER RESULTS

70 RESPONDENTS



OF YEARS



THINGS WE DO WELL

% Who Strongly Agree or Agree

- Availability (100%)
- High Standards (98.6%)
- Respects Autonomy (98.6%)
- Holds PSA's Accountable (98.6%)
- Supports PSA's (98.6%)

- Guided by Mission (97.2%)
- Communicates Contractual Performance (97.2%)
- Evidenced Based Decisions (97.1%)
- Competent, Knowledgeable (97.1%)

OPPORTUNITIES FOR IMPROVEMENT

% Who Strongly Agree or Agree

- CSO takes appropriate action when PSA does not meet obligations (71.4%)
 - Note: 22.9% marked “Not Applicable”
- CSO provides clear, adequate, evidenced-based and timely notice of contractual violations (78.6%)
 - Note: 14.3% marked “Not Applicable”
- CSO considers the impact of community health and whole child factors (90%)
- CSO works with my academy to provide enrichment activities (90%)

COMMENTS

- CSO is very responsive to requests for information, support, and resources.
- We feel 100% supported by LSSU and the level of accountability is appropriate and helpful.
- CSO is responsive, communicates well, and provides supplemental educational opportunities for our students consistently. We value various visits from LSSU representatives on our campuses along with a plethora of visits to LSSU each year. Reports are clear and visually understandable at the board level. Leadership at the top of the CSO is excellent. The LSSU CSO knows our schools and leaders in a way larger authorizers simply cannot. Overall we are very pleased with our relationship between our district and the CSO.
- LSSU has been one of the most supportive authorizers I have ever worked with.
- We are very blessed to have LSSU as an Authorizer for our Charter School. Having spoken to other school leaders, who have different Authorizers, LSSU CSO is definitely a cut above the rest. First and foremost, their number one priority is the success of students, staff, and districts. Their communication and information is ALWAYS pertinent and appreciated. They are ALWAYS available for a phone call when guidance is needed. They are top notch from the bottom to the top.
- Thank you for always being willing to work with us and develop an action plan. I am always grateful for Brooke's feedback to help move her forward.
- LSSU has been an invaluable partner in bolstering the success of our schools through diligent oversight, professional development, and timely informational updates. They also consistently engage in necessary, though challenging, conversations to ensure the success of both students and district operations, working closely with school leadership and board members.
- Great so far!
- Garnet Green is a terrific liaison.
- LSSU CSO team is great! They are accessible and approachable. The information received is always informative and impactful.
- Have enjoyed working with Lynn Methner. She oversees our academy with detailed insight and guidance.
- I'm not an educator by profession, as I'm a medical professional. But I must say I've learned a lot during my tenure as a school board member. I feel what I've learned and am continuing to learn is helping me to grow across the board. My evaluation of LSSU as authorizer is that this is a top notch authorizer. Keep up the good work and very high standards!!!!
- Thank you for all you do..... very much appreciated
- Since I only have the perspective of one school, some questions are difficult to answer. I don't know all the inner workings of the charter office. I would like to see the Board professional learning retreat at LSSU come back. That was valuable for the team and especially for new Board members. Joe Thlenes does a great job as our LSSU liaison.



Charter Schools Report
August 1, 2024

Appendix I: Proposed Resolution with Ascend Academy

Information

Action

Discussion

Purpose:

The purpose of this information is to provide the proposed resolution related to Agenda Item 3.

Background:

N/A

Suggested Action/Motion:

None

President's Recommendation:

N/A



**RESOLUTION ADOPTED BY LAKE SUPERIOR STATE UNIVERSITY
BOARD OF TRUSTEES ON AUGUST 1, 2024**

On motion by _____ and second by _____, the following resolution was adopted unanimously:

WHEREAS, the Michigan Legislature has provided for the establishment of public school academies as part of the Michigan public school system; and

WHEREAS, according to this legislation, the Lake Superior State University Board of Trustees (“University Board”), as the governing body of a state public university, is an authorizing body empowered to issue contracts to organize and operate public school academies; and

WHEREAS, Part 6a of the Revised School Code (“Code”) provides that public school academy contracts shall be issued on a competitive basis and that an authorizing body shall consider certain factors when issuing a contract, including: (i) the resources available for the proposed public school academy; (ii) the population to be served by the proposed public school academy; (iii) the educational goals to be achieved by the proposed public school academy; (iv) the applicant's track record, if any, in organizing public school academies or other public schools; (v) the graduation rate of a school district in which the proposed public school academy is proposed to be located; (vi) the population of a county in which the proposed public school academy is proposed to be located; and (viii) the number of schools in the proximity of a proposed location of the proposed public school academy that are on the list under section 1280c(1) of the Code, MCL 380.1280c(1), of the public schools in this state that the department has determined to be among the lowest achieving 5% of all public schools in this state;

WHEREAS, the University Board previously authorized the execution of a contract to charter a public school academy for Ascend Academy to commence operation July 1, 2024, with a term of five (5) years not to extend beyond June 30, 2029, however, Ascend Academy was unable to finalize an agreement for a facility needed to commence operations on July 1, 2024; and

WHEREAS, Ascend Academy requested that the University Board authorize the Director of the University’s Charter Schools Office (the “CSO Director”) to execute a contract to charter a public school academy that is effective July 1, 2025, for a term not to exceed five (5) years and not to extend beyond June 30, 2030 and the CSO Director supports that request.

NOW, THEREFORE, BE IT RESOLVED:

1. The University Board approves and authorizes the execution of a contract to charter a public school academy, effective July 1, 2025, to **Ascend Academy** not to exceed a term of five (5) years and not to extend beyond June 30, 2030, and authorizes the CSO Director to issue a contract to charter a public school academy and related documents to **Ascend Academy**, provided that, before execution of the Contract, the CSO Director affirms that:

- A. all terms of the contract have been agreed upon and the academy is able to comply with all terms and conditions of its contract and Applicable Law;
 - B. the academy has submitted all due diligence required by the CSO Director and the University Board’s legal counsel and the CSO Director is satisfied that the academy will be able to operate successfully;
 - C. the academy has identified and secured a facility deemed appropriate by the CSO Director; and
 - D. the Contract for **Ascend Academy** is substantially similar to previous charter contracts approved by the University Board, with the only changes being those: (i) that are consistent with the Application; or (ii) made by the CSO Director, in consultation with the University Board’s legal counsel that are in the best interest of the University Board.
2. This resolution shall be incorporated in and made part of **Ascend Academy’s** contract to charter a public school academy.

I, the undersigned, as Secretary of the Lake Superior State University Board of Trustees, do hereby certify the foregoing resolution was adopted by the Lake Superior State University Board of Trustees at a public meeting held on the 1st day of August, 2024, with a vote of _____ for, _____ opposed, and _____ abstaining.

Signature: _____

076439.000028 4895-9110-6251.1